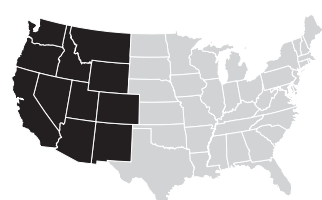


Wildfires are **increasing** and wildfire season is getting **longer** in the Western U.S.



Average number of large wildfires per year

bigger than 1,000 acres



1980-1989
~140



1990-1999
~160



2000-2012
~250

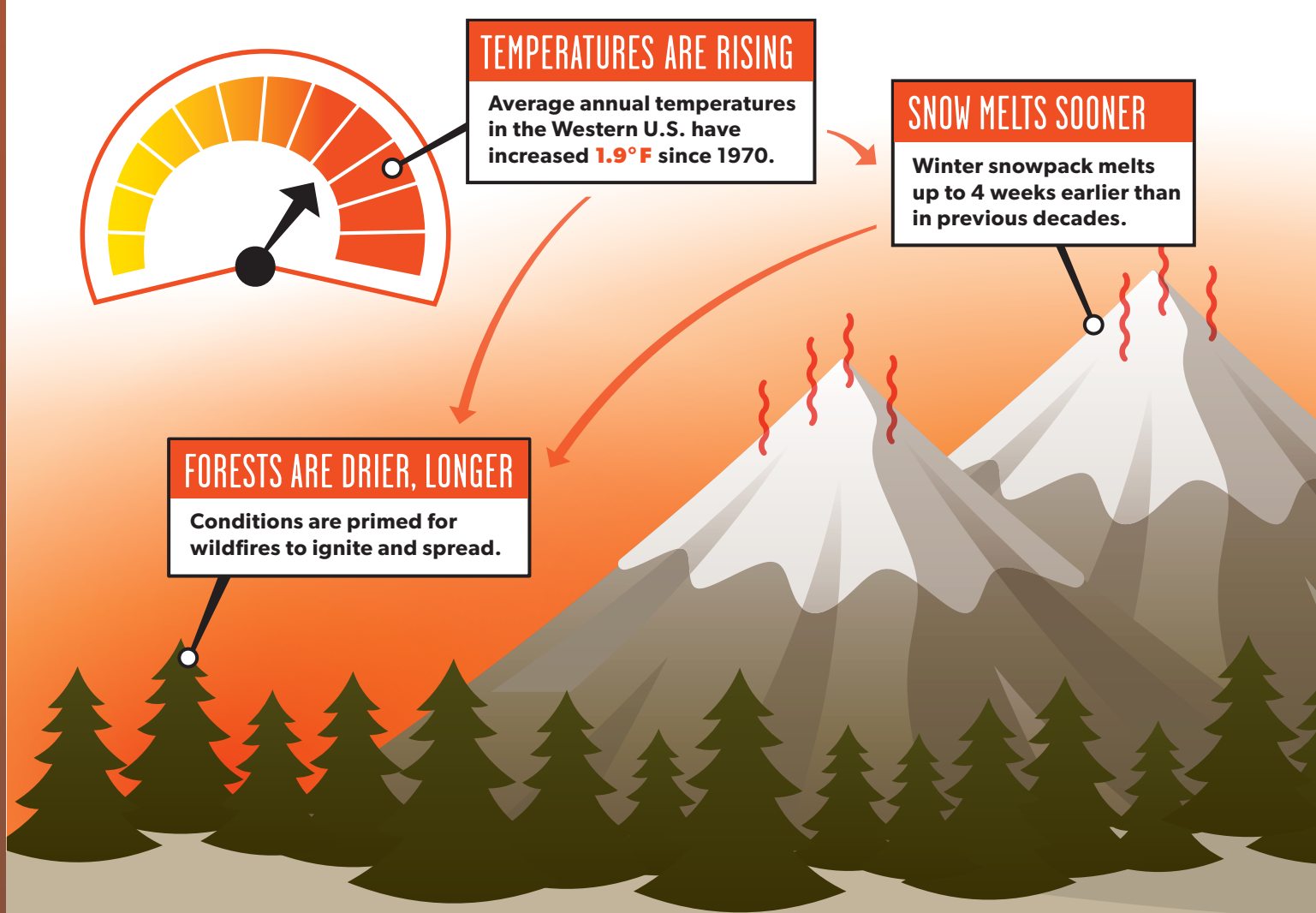
Average length of wildfire season

Early 1970s: **5 months**



Today: **7+ months**

Climate change is driving up temperatures and **increasing wildfire risk**.

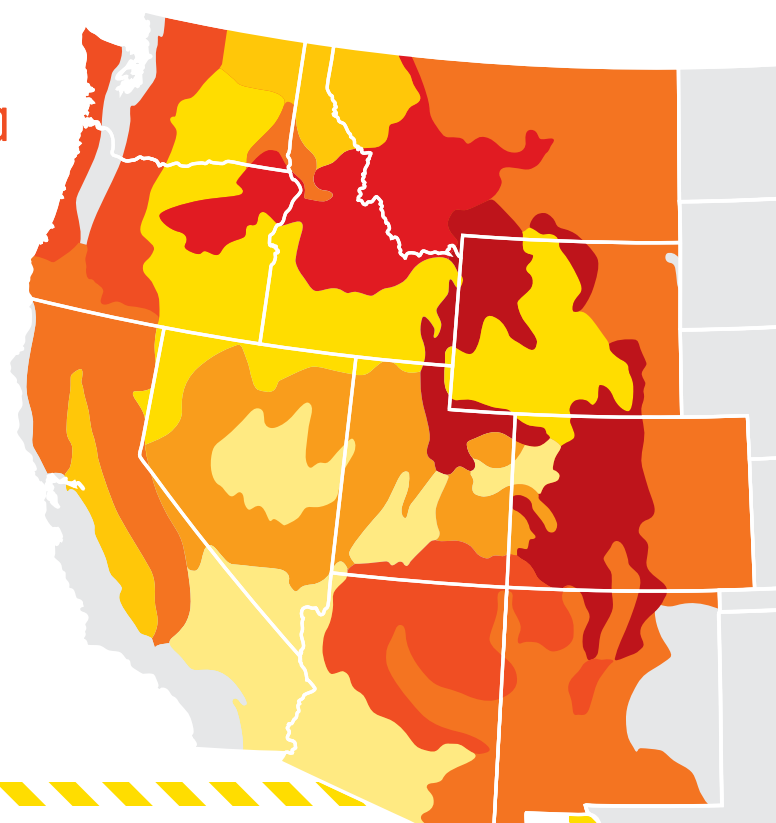


Wildfires are projected to **burn more land** as temperatures continue to rise.

Projected increase in annual burn area with an additional 1.8°F rise in temperature

0% — 200% — 400% — 650%

By mid-century, temperatures in the Western U.S. are expected to increase even more (**2.5°–6.5° F**) due to heat-trapping emissions from human activity.



The choices we make **today** will determine how much temperatures increase this century, how long and damaging wildfire seasons become, and how prepared communities are for the growing risks of wildfires.